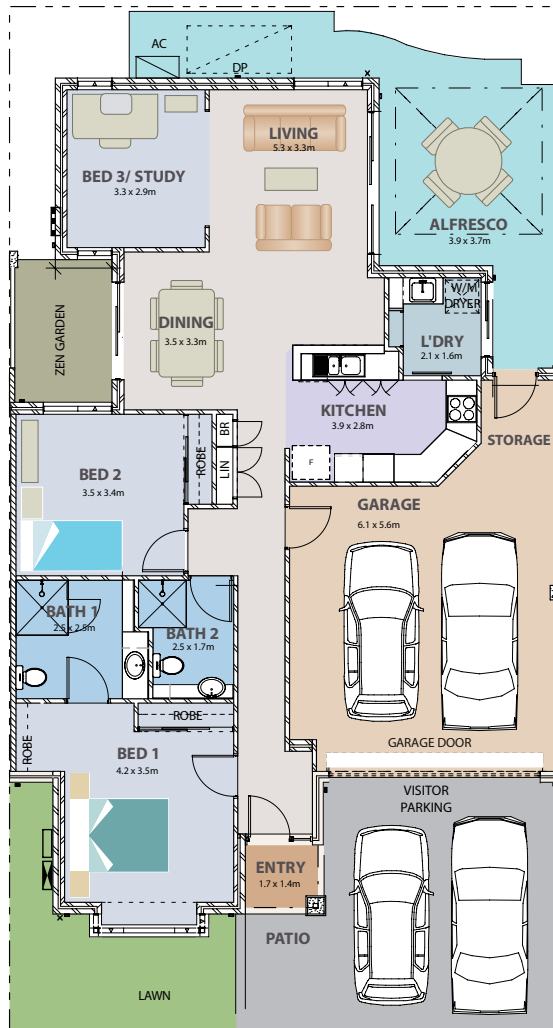


Love the life you live!

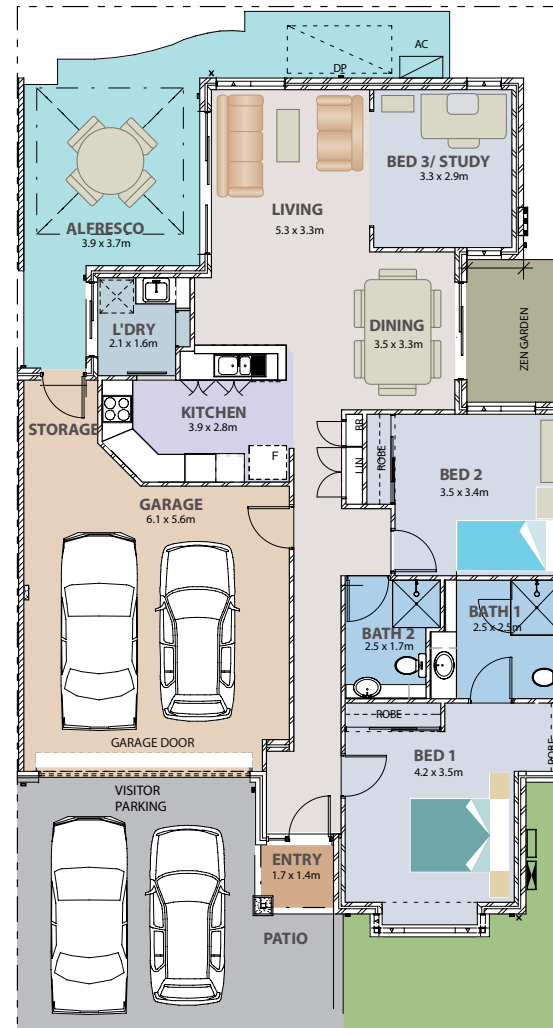
AT LAWLEY PARK VILLAGE



Floorplan 1



Floorplan 2



House Area : 118.7 sqm
 Double Garage + Store : 38.3 sqm
 Alfresco : 14.4 sqm
 Entrance Porch : 2.4 sqm
TOTAL AREA : 173.8 sqm



Enquiries

Linda Migro

Property Sales Consultant
 Mobile: 0439 099 171

Gary Watts

Residential Services Manager
 Phone: 9271 8333
 Fax: 9271 8555